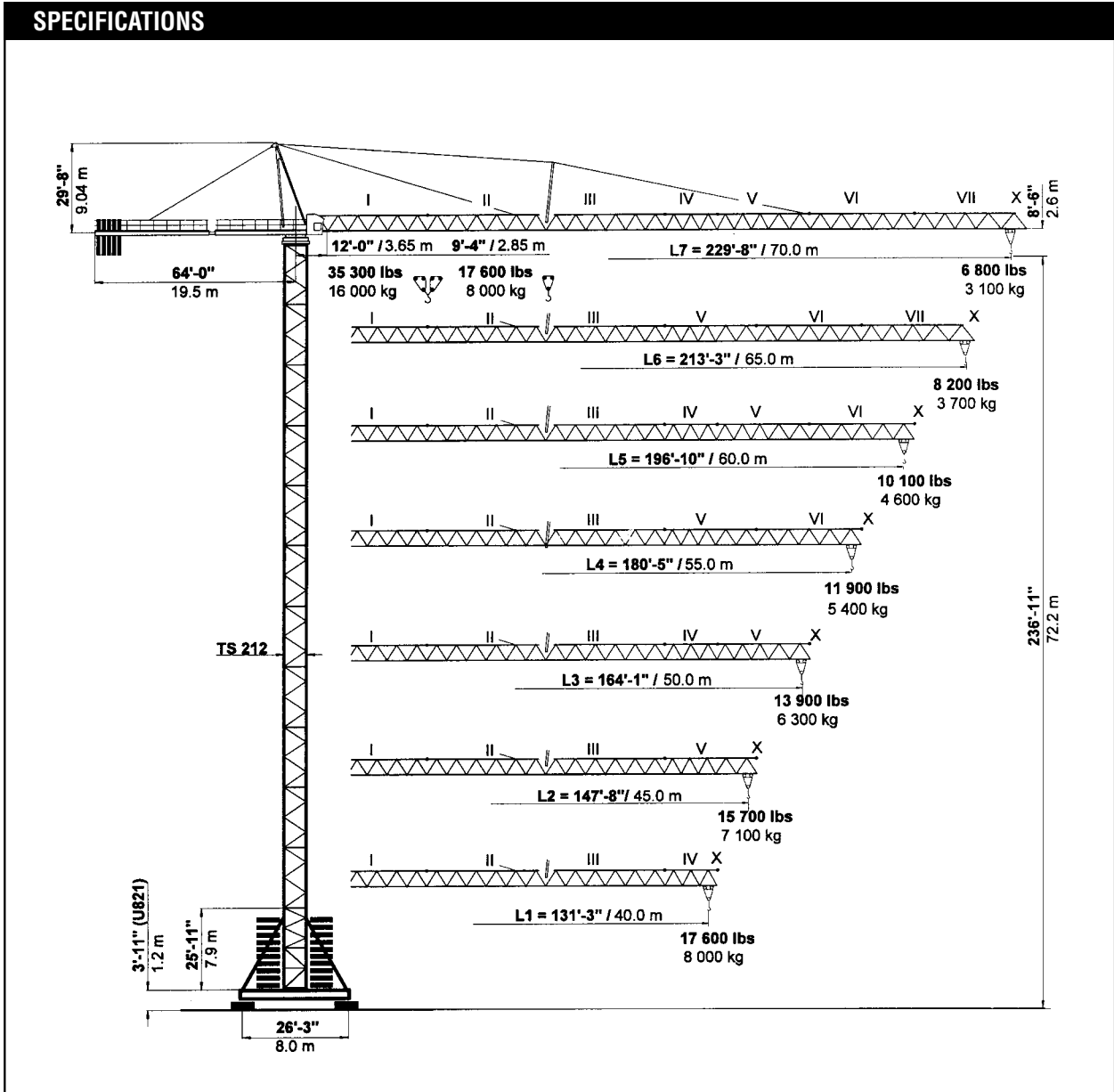




PEINER SK 315

Hammerhead Tower Crane
 17,600-35,300 lbs. (8-16 mt)
 Lifting Capacity

SPECIFICATIONS



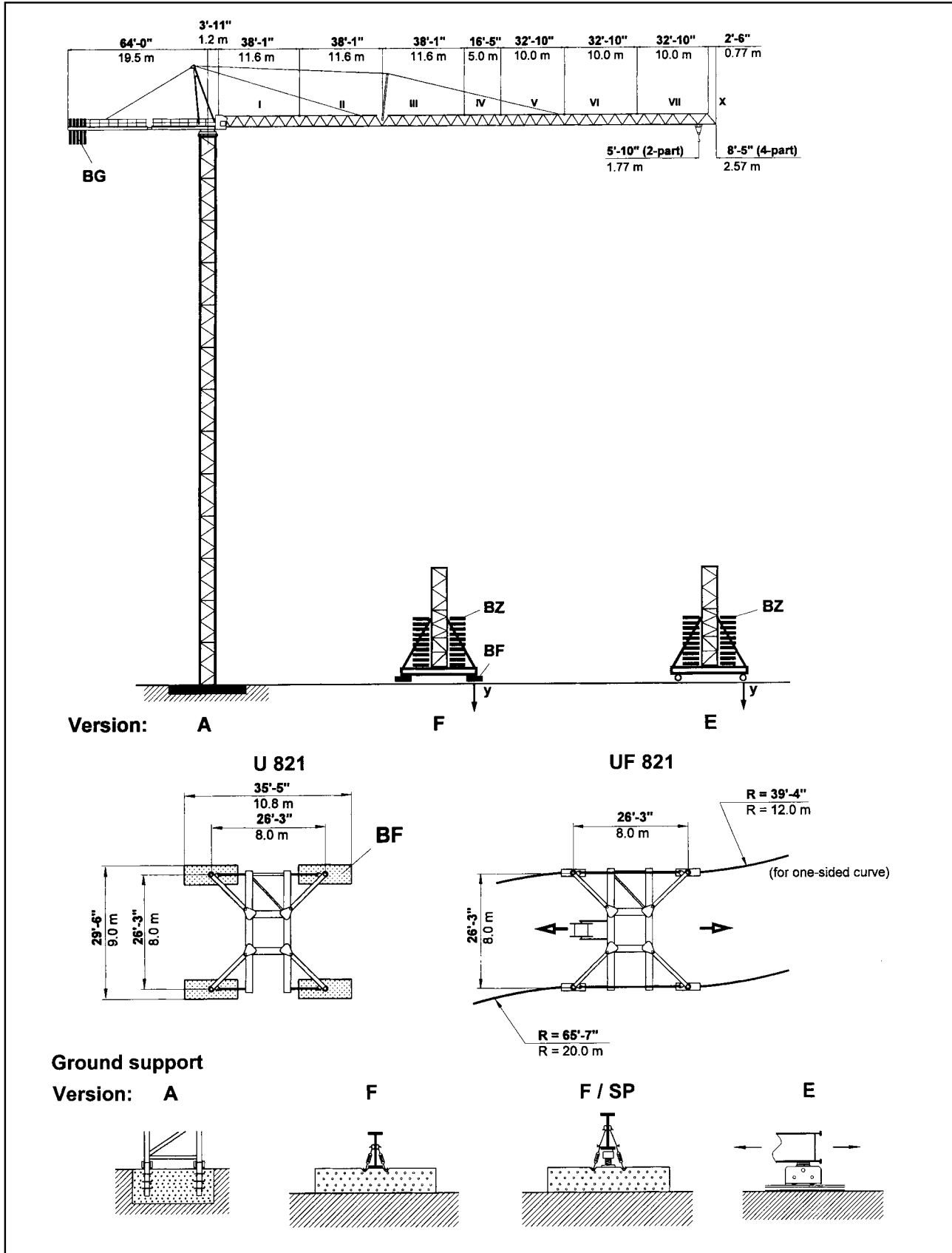
simple, available and
 cost effective™

Machines shown may have optional equipment.

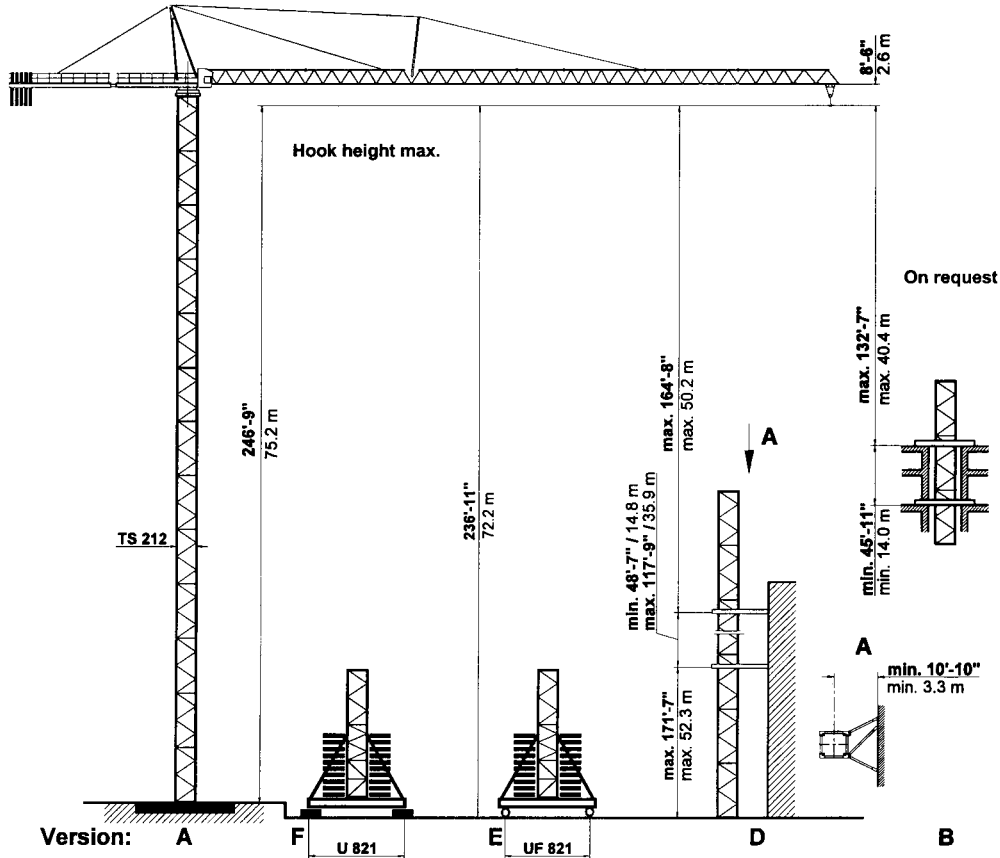


PEINER SK 315

Combinations of tower section, hook heights, forces acting per corner, base ballast



PEINER SK 315 Tower TS 211



TS 212	Version A		Version F			Version E					
	Tower	HH	Tower	HH	BZ + BF	in service	out of service	BZ	in service	out of service	
TS 212.1	ft	m	TSV 212	ft	kips / t	kips / kN	kips / kN	kips / t	kips / kN	kips / kN	
13 x TS 212.1	246'-9"*	75.2*									
12 x TS 212.1	227'-4"*	69.3*	1 x TSV 212	236'-11"*	212.0	204	279	198.0	212	282	
			11 x TS 212.1	72.2*	96	909	1243	90	942	1253	
11 x TS 212.1	208'-0"*	63.4*	1 x TSV 212	217'-6"*	168.0	186	240	154.0	192	242	
			10 x TS 212.1	66.3*	76	826	1066	70	856	1075	
10 x TS 212.1	188'-8"*	57.5*	1 x TSV 212	198'-2"	146.0	173	203	132.0	179	204	
			9 x TS 212.1	60.4	66	770	901	60	797	909	
9 x TS 212.1	169'-4"	51.6	1 x TSV 212	178'-10"	124.0	161	169	88.0	161	169	
			8 x TS 212.1	54.5	56	715	751	40	715	754	
8 x TS 212.1	149'-11"	45.7	1 x TSV 212	159'-5"	101.0	149	145	88.0	154	170	
			7 x TS 212.1	48.6	46	661	645	40	683	654	
7 x TS 212.1	130'-7"	39.8	1 x TSV 212	140'-1"	101.0	142	128	66.0	141	124	
			6 x TS 212.1	42.7	46	633	569	30	629	553	
6 x TS 212.1	111'-3"	33.9	1 x TSV 212	120'-9"	101.0	136	112	66.0	135	108	
			5 x TS 212.1	36.8	46	607	499	30	600	482	
5 x TS 212.1	91'-10"	28.0	1 x TSV 212	101'-5"	101.0	131	98	66.0	129	94	
			4 x TS 212.1	30.9	46	582	435	30	573	418	
4 x TS 212.1	72'-6"	22.1	1 x TSV 212	82'-0"	101.0	126	85	66.0	123	81	
			3 x TS 212.1	25.0	46	559	376	30	548	359	
3 x TS 212.1	53'-2"	16.2	1 x TSV 212	62'-8"	101.0	120	80	66.0	118	75	
			2 x TS 212.1	19.1	46	536	356	30	523	335	
2 x TS 212.1	33'-9"	10.3	1 x TSV 212	43'-4"	101.0	116	80	66.0	112	75	
			1 x TS 212.1	13.2	46	515	356	30	500	335	
Foundation 25'-7" x 25'-7" x 5'-7" 7.8 x 7.8 x 1.7 m			Stationary base U 821			Travelling base UF 821					
Anchor stools 4 x FF 212			BF 4 x 8.82 kips 4 x 4.0 t			BZ block 11.02 kips Block 5.0 t			Bogle Curve F 500		

If TSK 212 section is used the hook height is increased by 6'-7" (2 m).

* Lower climbing section after erection.



TS 212.1 = 19'-4 1/4" / 5.9 m

TSV 212 = 25'-11" / 7.9 m

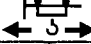





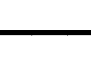
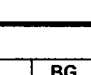

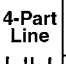
TSK 212 = 6'-7" / 2.0 m



PEINER SK 315 Radius and Capacity

Jib	Max. capacity max. 17,600 lbs 8.0 t	Radius – ft./m Capacity – lbs./mt																			
		2-Part Line  max. 17,600 lbs max. 8.0 t																			
ft m		75'-6" 23	82'-0" 25	98'-5" 30	114'-10" 35	131'-3" 40	141'-1" 43	147'-8" 45	157'-6" 48	164'-1" 50	173'-11" 53	180'-5" 55	190'-3" 58	196'-10" 60	206'-8" 63	213'-3" 65	223'-1" 68	229'-8" 70			
L7	229'-8" 70.0	9'-4" - 96'-9" 2.85 - 29.5 m	17600 8.0	17600 8.0	17400 7.9	14800 6.7	12800 5.8	11900 5.4	11200 5.1	10600 4.8	10100 4.6	9500 4.3	9000 4.1	8600 3.9	8200 3.7	7700 3.5	7500 3.4	7100 3.2	6800 3.1		
L6	213'-3" 65.0	9'-4" - 105'-0" 2.85 - 32.0 m	17600 8.0	17600 8.0	17600 8.0	16100 7.3	13900 6.3	13000 5.9	12300 5.6	11500 5.2	11000 5.0	10400 4.7	9900 4.5	9300 4.2	8800 4.0	8600 3.9	8200 3.7				
L5	196'-10" 60.0	9'-4" - 117'-9" 2.85 - 35.9 m	17600 8.0	17600 8.0	17600 8.0	17600 8.0	15700 7.1	14600 6.6	13900 6.3	13000 5.9	12300 5.6	11700 5.3	11200 5.1	10600 4.8	10100 4.6						
L4	180'-5" 55.0	9'-4" - 124'-8" 2.85 - 38.0 m	17600 8.0	17600 8.0	17600 8.0	17600 8.0	16800 7.6	15400 7.0	14800 6.7	13900 6.3	13200 6.0	12300 5.6	11900 5.4								
L3	164'-1" 50.0	9'-4" - 130'-11" 2.85 - 39.9 m	17600 8.0	17600 8.0	17600 8.0	17600 8.0	17600 8.0	16300 7.4	15400 7.0	14600 6.6	13900 6.3										
L2	147'-8" 45.0	9'-4" - 131'-11" 2.85 - 40.2 m	17600 8.0	17600 8.0	17600 8.0	17600 8.0	17600 8.0	16500 7.5	15700 7.1												
L1	131'-3" 40.0	9'-4" - 131'-3" 2.85 - 40.0 m	17600 8.0	17600 8.0	17600 8.0	17600 8.0															
ft m		4-Part Line  max. 35,300 lbs max. 16.0 t																Radius - 2'-7" (- 0.8 m)			
L7	227'-0" 69.2	12'-0" - 48'-7" 3.65 - 14.8 m	21800 9.9	19600 8.9	16100 7.3	13200 6.0	11200 5.1	10400 4.7	9700 4.4	9000 4.1	8600 3.9	7900 3.6	7500 3.4	7100 3.2	6600 3.0	6200 2.8	6000 2.7	5500 2.5	5300 2.4		
L6	210'-8" 64.2	12'-0" - 52'-2" 3.65 - 15.9 m	23800 10.8	21600 9.8	17400 7.9	14600 6.6	12600 5.7	11500 5.2	10800 4.9	9900 4.5	9500 4.3	8800 4.0	8400 3.8	7700 3.5	7500 3.4	6800 3.1	6600 3.0				
L5	194'-3" 59.2	12'-0" - 57'-9" 3.65 - 17.6 m	26900 12.2	24500 11.1	19800 9.0	16800 7.6	14300 6.5	13000 5.9	12300 5.6	11500 5.2	10800 4.9	10100 4.6	9700 4.4	9000 4.1	8600 3.9						
L4	177'-10" 54.2	12'-0" - 61'-0" 3.65 - 18.6 m	28700 13.0	26000 11.8	21200 9.6	17900 8.1	15200 6.9	14100 6.4	13200 6.0	12300 5.6	11700 5.3	10800 4.9	10400 4.7								
L3	161'-5" 49.2	12'-0" - 63'-8" 3.65 - 19.4 m	30200 13.7	27300 12.4	22300 10.1	18700 8.5	16100 7.3	14800 6.7	14100 6.4	12800 5.8	12300 5.6										
L2	145'-0" 44.2	12'-0" - 64'-0" 3.65 - 19.5 m	30400 13.8	27600 12.5	22500 10.2	19000 8.6	16300 7.4	15000 6.8	14100 6.4												
L1	128'-7" 39.2	12'-0" - 66'-3" 3.65 - 20.2 m	31700 14.4	28700 13.0	23600 10.7	19800 9.0	17000 7.7														

Speeds

FU 8-160/4		v = 0 → ~290 fpm (88 m / min.)	10.2 HP 7.5 kW			
SR 10-190/3		v = 0 → ~96 fpm (30 m / min.)	2 x 16.3 HP 2 x 12.0 kW			
K WB 120/4		v = 0 → 0.9 rpm (min ⁻¹)	2 x 11.4 HP 2 x 8.4 kW			
 HK max. = 705' (215 m) 6 - layers			480 V / 60 Hz / 3 ph			
Type SR WB 66-80/4F [108 HP] [79 kW]	   	 2-Part Line → 444 fpm 134 m/min → 276 fpm 84 m/min → 180 fpm 54 m/min → 108 fpm 34 m/min	 4-Part Line → 222 fpm 67 m/min → 138 fpm 42 m/min → 90 fpm 27 m/min → 54 fpm 17 m/min	5 500 lbs 2 500 kg 9 300 lbs 4 200 kg 13 900 lbs 6 300 kg 17 600 lbs 8 000 kg	11 000 lbs 5 000 kg 18 600 lbs 8 400 kg 27 800 lbs 12 600 kg 35 300 lbs 16 000 kg	Total motor output ~140 HP without SR 10-190/3 ~105 kW Connected power 170 kVA

Counterweight

Jib		L 1	L 2	L 3	L 4	L 5	L 6	L 7
Counterweight	BG	30 000 lbs 13 600 kg	32 200 lbs 14 600 kg	36 600 lbs 16 600 kg	39 150 lbs 17 750 kg	43 550 lbs 19 750 kg	41 350 lbs 18 750 kg	45 750 lbs 20 750 kg
	[lbs]	3 x 6 950 1 x 9 150	2 x 6 950 2 x 9 150	4 x 9 150	3 x 6 950 2 x 9 150	1 x 6 950 4 x 9 150	2 x 6 950 3 x 9 150	5 x 9 150
	[t]	3 x 3.15 1 x 4.15	2 x 3.15 2 x 4.15	4 x 4.15	3 x 3.15 2 x 4.15	1 x 3.15 4 x 4.15	2 x 3.15 3 x 4.15	5 x 4.15



PEINER SK 315 Dimensions and transport weights

See operating manual for mounting weights

	Designation		Dimensions (ft / m)			Weight	Volume
			l	b	h	lbs / t	ft³ / m³
1	Jib Section III		39.01	4.99	7.09	4 200	1 386
			11.94	1.52	2.16	1.92	39.2
2	Jib Section I		39.01	4.99	5.84	3 790	1 137
	Section II		11.89	1.52	1.78	1.72	32.2
	Section III		38.65	4.99	6.17	4 320	1 190
	Section IV		11.78	1.52	1.88	1.96	33.7
	Section V		19.19	4.99	5.41	1 760	519
	Section VI		5.85	1.52	1.65	0.80	14.7
	Section VII		35.34	4.99	5.45	3 090	961
	Jib tip X		10.77	1.52	1.66	1.40	27.2
			36.03	4.99	5.48	2 470	985
3	Turntable with slewing ring support and cabin		36.35	7.64	7.81	25 350	2 169
			11.08	2.33	2.38	11.50	61.4
	Turntable with slewing ring support		31.99	7.64	7.81	24 030	1 911
		9.75	2.33	2.38	10.90	54.1	
	Cabin with support and railing		10.17	4.92	7.25	1 320	364
			3.10	1.50	2.21	0.60	10.3
4	Counter jib with hoist winch		38.13	5.91	6.00	14 550	1 353
			11.62	1.80	1.83	6.60	38.3
	Hoist winch	66 WB	7.51	5.45	3.28	5 400	134
			2.29	1.66	1.00	2.45	8.4
5	Counterweight	BG	3.94	1.64	9.32	6 950	60
			1.20	0.50	2.84	3.15	1.4
			3.94	1.64	12.11	9 150	78
			1.20	0.50	3.69	4.15	1.7
6	Tower section	TS 212.1	19.52	7.78	8.01	9 130	1 216
			5.95	2.37	2.45	4.14	34.4
		TSV 212 with struts	31.17	9.84	10.00	20 330	3 067
		9.50	3.00	3.05	9.22	86.9	
	TSK 212	6.63	7.87	9.84	6 170	513	
		2.02	2.40	3.00	2.80	14.5	
7	Travelling base, folded	UF 821	41.01	9.74	7.05	35 050	2 816
			12.5	2.97	2.15	15.90	79.8
8	Stationary base, folded	U 821	34.55	9.06	2.79	17 130	873
			10.53	2.76	0.85	7.77	24.7
9	Central ballast block	BZ	11.48	4.92	2.20	11 020	124
			3.50	1.50	0.67	5.00	3.5
10	Foundation pad	BF	9.19	3.28	1.87	8 820	57
			2.80	1.00	0.57	4.00	1.6
11	Accessories					4 800	
						2.17	



For more information, product demonstration, or details on lease and rental plans, please contact your local Terex Towers Distributor.

We reserve the right to amend these specifications at any time without notice. The only warranty applicable is our standard written warranty applicable to the particular product and sale. We make no other warranty, expressed or implied.

Bigge Crane and Rigging Co.

10700 Bigge Avenue
San Leandro, CA 94577
Phone: (888) 337-BIGGE or (510) 638-8100
Fax: (510) 639-4053
Email: towers@bigge.com
Web site: www.biggetowercrane.com

 **TEREX TOWERS**

202 Raleigh Street
Wilmington, NC 28412 USA
(910) 395-8500 • FAX: (910) 395-8547
E-mail: wilmington@terexlifting.com



www.terexlift.com

