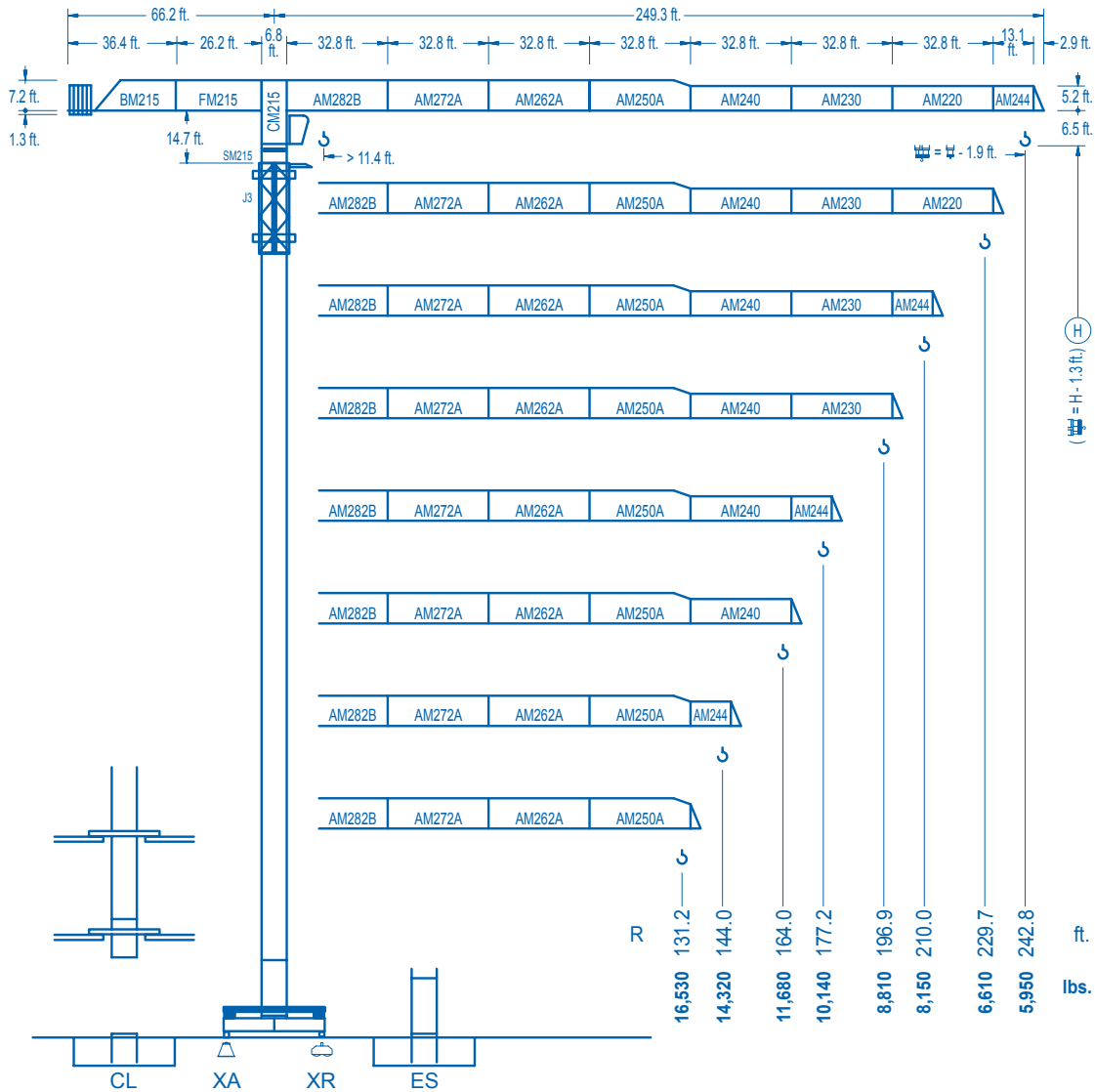


## LINDEN COMANSA

LINDEN 2100

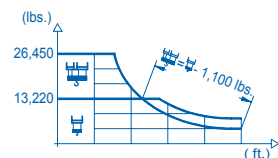
21 LC 290

26,450 lbs.



CE EN 14439 (C/25)

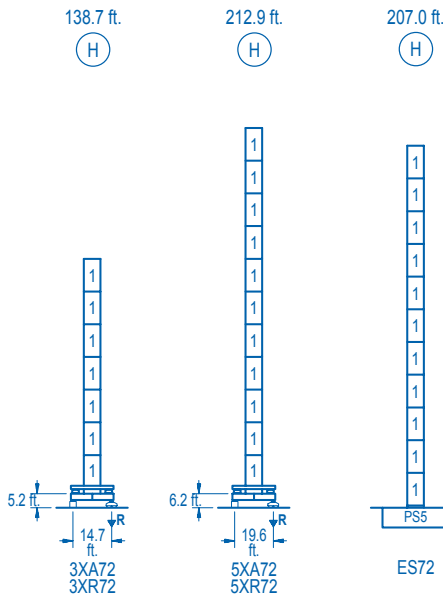
| R (ft.) | H      |        |        |        | H      |        |        |        |        |       |       |       |       |      |
|---------|--------|--------|--------|--------|--------|--------|--------|--------|--------|-------|-------|-------|-------|------|
| 242.8   | 66.3   | 82.0   | 98.4   | 117.8  | 122.4  | 131.2  | 144.4  | 164.0  | 177.2  | 196.9 | 210.0 | 229.7 | 242.8 | ft.  |
|         | 26,450 | 20,600 | 16,530 | 13,220 | 13,220 | 12,220 | 10,970 | 9,470  | 8,660  | 7,660 | 7,090 | 6,370 | 5,950 | lbs. |
| 229.7   | 67.9   | 82.0   | 98.4   | 120.7  | 126.3  | 131.2  | 144.4  | 164.0  | 177.2  | 196.9 | 210.0 | 229.7 |       | ft.  |
|         | 26,450 | 21,180 | 17,010 | 13,220 | 13,220 | 12,660 | 11,360 | 9,820  | 8,980  | 7,940 | 7,360 | 6,610 |       | lbs. |
| 210.0   | 73.2   | 82.0   | 98.4   | 111.5  | 129.9  | 137.5  | 144.4  | 164.0  | 177.2  | 196.9 | 210.0 |       |       | ft.  |
|         | 26,450 | 23,080 | 18,580 | 15,970 | 13,220 | 13,220 | 12,530 | 10,840 | 9,930  | 8,790 | 8,150 |       |       | lbs. |
| 196.9   | 72.5   | 82.0   | 98.4   | 111.5  | 129.3  | 137.8  | 144.4  | 164.0  | 177.2  | 196.9 |       |       |       | ft.  |
|         | 26,450 | 22,900 | 18,450 | 15,860 | 13,220 | 13,220 | 12,550 | 10,860 | 9,950  | 8,810 |       |       |       | lbs. |
| 177.2   | 73.2   | 82.0   | 98.4   | 111.5  | 130.6  | 140.1  | 144.4  | 164.0  | 177.2  |       |       |       |       | ft.  |
|         | 26,450 | 23,140 | 18,650 | 16,030 | 13,220 | 13,220 | 12,780 | 11,060 | 10,140 |       |       |       |       | lbs. |
| 164.0   | 76.1   | 82.0   | 98.4   | 111.5  | 131.2  | 135.8  | 147.0  | 164.0  |        |       |       |       |       | ft.  |
|         | 26,450 | 24,260 | 19,570 | 16,850 | 13,810 | 13,220 | 13,220 | 11,680 |        |       |       |       |       | lbs. |
| 144.4   |        | 85.0   | 98.4   | 111.5  | 121.4  | 131.2  | 144.4  |        |        |       |       |       |       | ft.  |
|         |        | 26,450 | 22,260 | 19,210 | 17,370 | 15,800 | 14,320 |        |        |       |       |       |       | lbs. |
| 131.2   |        | 86.6   | 98.4   | 111.5  | 121.4  | 131.2  |        |        |        |       |       |       |       | ft.  |
|         |        | 26,450 | 22,800 | 19,680 | 17,800 | 16,530 |        |        |        |       |       |       |       | lbs. |



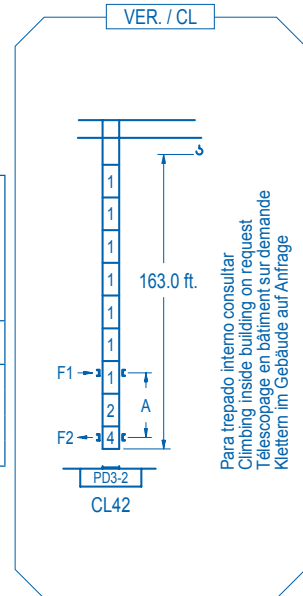
DS.1003.07 01/10

Reserva de modificaciones. Subject to modifications. Modifications réservées. Konstruktionsänderungen vorbehalten.





| n° | Ref.   | h (ft.) | h (ft.) |
|----|--------|---------|---------|
| 1  | S25    | 6.5     | 18.0    |
| 2  | TD23A  | 6.5     | 18.0    |
| 3  | D23    | 6.5     | 18.0    |
| 4  | CLD23A | 6.5     | 10.1    |



|       | 3XA72 | 5XA72 | ES72  |
|-------|-------|-------|-------|
| A max | 95.5  | 168.6 | 162.7 |
| B max | 108.3 | 108.3 | 108.3 |
| C max | 170.6 | 152.6 | 152.6 |
| H max | 266.1 | 356.3 | 321.2 |
|       | 396.7 | 315.3 | 423.6 |

|                |              |                        |
|----------------|--------------|------------------------|
| <b>R. máx.</b> | En servicio  | 3XR72.....231,480 lbs. |
|                | In operation |                        |
|                | En service   |                        |
|                | In Betrieb   |                        |

|                |                   |                        |
|----------------|-------------------|------------------------|
| <b>R. máx.</b> | Fuera de servicio | 3XR72.....162,700 lbs. |
|                | Out of service    |                        |
|                | Hors service      |                        |
|                | Ausser Betrieb    |                        |

Para otras zonas de viento o alturas superiores consultar  
 For other wind zones or additional hook heights on request  
 Pour d'autres zones de vent ou des hauteurs supplémentaires sur demande  
 Für andere Windzonen oder weiteren Hakenhöhen auf Anfrage

**CFU-7.5**  
10 hp.  
0 ⇄ 308 ft./min

**GR-12**  
3 x 88 ft.lbs.  
0 ⇄ 0.7 rpm

**TRA-7.5**  
2 x 55 ft.lbs.  
0 ⇄ 78 ft./min

**TRA-7.5VC** \*  
2 x 55 ft.lbs.  
0 ⇄ 78 ft./min  
5XR72

**EFU2-37-30**  
1,260 ft.  
50 hp.  
13,220 lbs. / 111 ft./min to 4,850 lbs. / 262 ft./min  
26,450 lbs. / 56 ft./min to 9,700 lbs. / 131 ft./min

**EFU4-45-30** \*  
1,790 ft.  
60 hp.  
13,220 lbs. / 125 ft./min to 2,640 lbs. / 525 ft./min  
26,450 lbs. / 62 ft./min to 5,290 lbs. / 262 ft./min

**EFU4-65-30** \*  
2,590 ft.  
87 hp.  
13,220 lbs. / 174 ft./min to 2,640 lbs. / 735 ft./min  
26,450 lbs. / 88 ft./min to 5,290 lbs. / 367 ft./min

|                         |       |
|-------------------------|-------|
| Tensión de alimentación | 480 V |
| Operating voltage       | 3 ph  |
| Tension de service      | 60 Hz |
| Betriebsspannung        |       |

|            |   |
|------------|---|
| Opcional   | * |
| Optional   |   |
| En option  |   |
| Kaufoption |   |

**LINDEN COMANSA**  
Construcciones Metálicas COMANSA S. A.

Tel.: (34) 948 335 020  
 Fax: (34) 948 330 810  
 e-mail: info@comansa.com  
 www.comansa.com

Polígono Urbizkain  
 E-31620 HUARTE-PAMPLONA.- SPAIN

|                   |       |                  |                    |
|-------------------|-------|------------------|--------------------|
| <b>DS.1003.07</b> | 01/10 | <b>21 LC 290</b> | <b>26,450 lbs.</b> |
|-------------------|-------|------------------|--------------------|