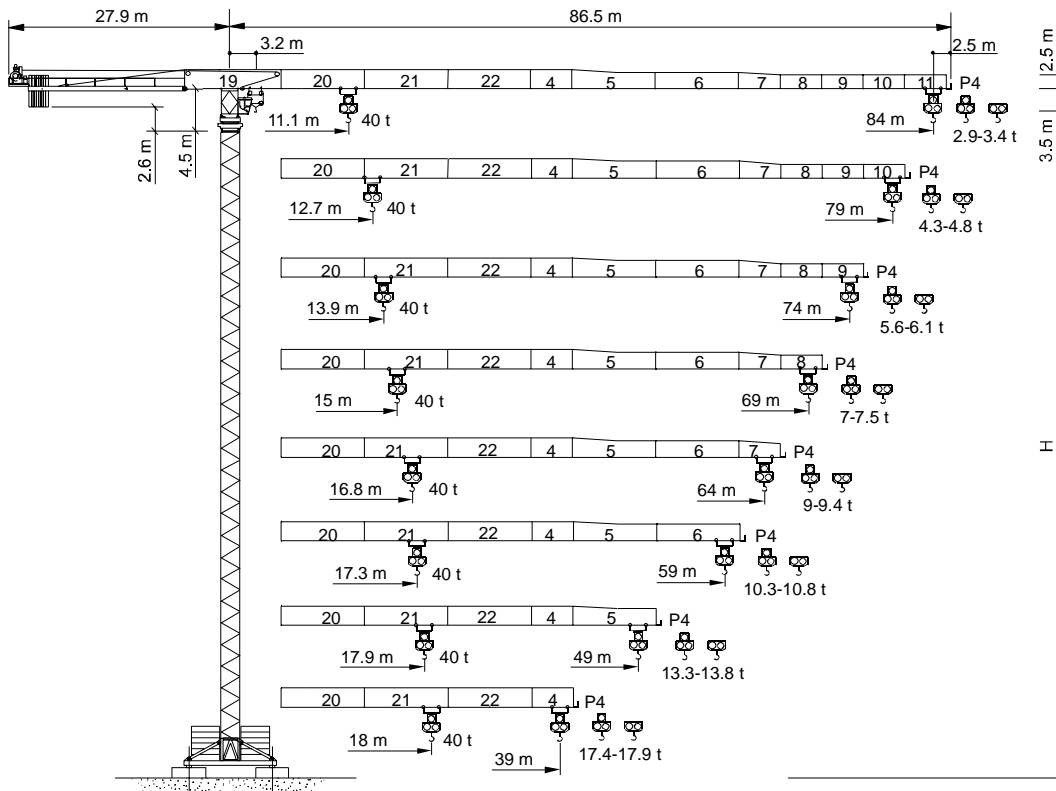




Gru a torre "Flat Top"

"Flat Top" Tower Crane • Grue à tour "Flat Top"
"Flat Top" Turmdrehkran • Grúa torre "Flat Top"



CTT 721-40 HD23

Dati illustrativi non impegnativi
 Con riserva di modifica senza preavviso

Specifications and data not binding
 Subject to modification without notice

Données techniques seulement indicatives
 Modifications réservées sans préavis

Angaben und Beschreibung unverbindlich
 Änderungen vorbehalten ohne weitere Mitteilung

Dibujos y datos sin compromiso
 Modificaciones reservadas sin preaviso

UTEDOC.REL.001-5



TEREX | COMEDIL

CTT 721-40

I Diagramma di portata / Load Diagram
F Courbes de charges / Lastkurven
E Curvas de cargas

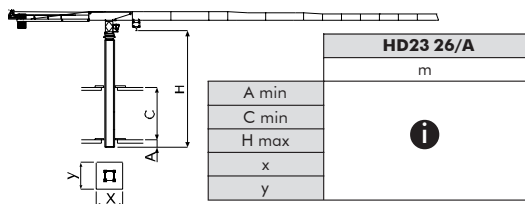
GB
D

i		CTT 721-40														
		m	19	24	29	34	39	44	49	54	59	64	69	74	79	84
20 t	- 21,5 m	t	20,00	17,70	14,25	11,81	10,00	8,60	7,49	6,58	5,82	5,19	4,64	4,17	3,76	3,40
20 t	- 20,9 m	t	20,00	17,08	13,65	11,24	9,44	8,05	6,95	6,05	5,30	4,67	4,13	3,67	3,26	2,90
40 t	- 11,1 m	t	22,30	17,08	13,65	11,24	9,44	8,05	6,95	6,05	5,30	4,67	4,13	3,67	3,26	2,90
20 t	- 24,7 m	t	20,00	20,00	16,73	13,96	11,90	10,30	9,04	8,00	7,15	6,42	5,80	5,27	4,80	
20 t	- 24,0 m	t	20,00	20,00	16,14	13,39	11,35	9,76	8,51	7,48	6,63	5,91	5,30	4,76	4,30	
40 t	- 12,7 m	t	25,99	20,04	16,14	13,39	11,35	9,76	8,51	7,48	6,63	5,91	5,30	4,76	4,30	
20 t	- 27,1 m	t	20,00	20,00	18,54	15,54	13,30	11,57	10,19	9,07	8,14	7,35	6,68	6,10		
20 t	- 26,4 m	t	20,00	20,00	17,97	14,98	12,75	11,03	9,67	8,55	7,63	6,85	6,18	5,60		
40 t	- 13,9 m	t	28,67	22,20	17,97	14,98	12,75	11,03	9,67	8,55	7,63	6,85	6,18	5,60		
20 t	- 29,3 m	t	20,00	20,00	20,00	16,99	14,59	12,74	11,26	10,06	9,06	8,22	7,50			
20 t	- 28,5 m	t	20,00	20,00	19,65	16,44	14,05	12,21	10,74	9,55	8,55	7,72	7,00			
40 t	- 15,0 m	t	31,13	24,19	19,65	16,44	14,05	12,21	10,74	9,55	8,55	7,72	7,00			
20 t	- 32,6 m	t	20,00	20,00	20,00	19,12	16,46	14,41	12,77	11,44	10,33	9,40				
20 t	- 32,1 m	t	20,00	20,00	20,00	18,77	16,10	14,03	12,39	11,05	9,94	9,00				
40 t	- 16,8 m	t	35,22	27,45	22,36	18,77	16,10	14,03	12,39	11,05	9,94	9,00				
20 t	- 33,9 m	t	20,00	20,00	20,00	19,93	17,17	15,03	13,33	11,95	10,80					
20 t	- 33,1 m	t	20,00	20,00	20,00	19,40	16,64	14,52	12,82	11,45	10,30					
40 t	- 17,3 m	t	36,34	28,34	23,10	19,40	16,64	14,52	12,82	11,45	10,30					
20 t	- 34,9 m	t	20,00	20,00	20,00	20,00	17,75	15,55	13,80							
20 t	- 34,1 m	t	20,00	20,00	20,00	20,00	17,24	15,05	13,30							
40 t	- 17,9 m	t	37,57	29,31	23,90	20,08	17,24	15,05	13,30							
20 t	- 35,2 m	t	20,00	20,00	20,00	20,00	17,90									
20 t	- 34,4 m	t	20,00	20,00	20,00	20,00	17,40									
40 t	- 18,0 m	t	37,89	29,57	24,11	20,26	17,40									

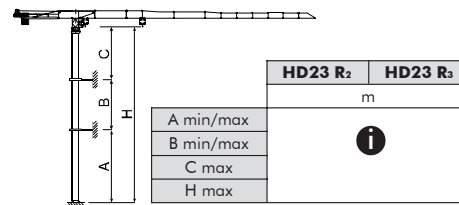
I Altre installazioni / Other configurations
F Autres implantations / Aufstellmöglichkeiten
E Otras implantaciones

GB
D

Gru climbing - Bottom climbing crane - T elescopage sur dalles
Kletterkran im Geb aude - Telescopage gr ua trepadora



Gru ancorata - Crane tied to the structure - Grue ancr ee
Geankerter Kran - Gr ua anclada



i Consultateci
I Consult us
GB Nous consulter
F Auf Anfrage
E Consultarnos



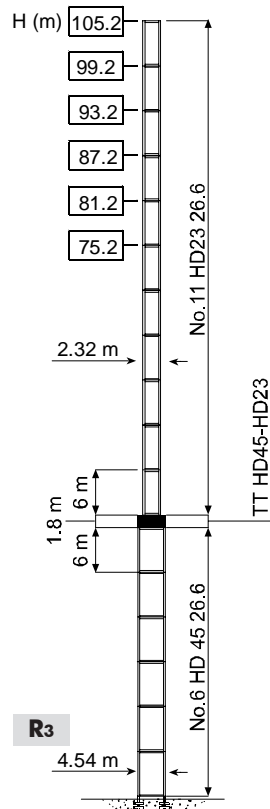
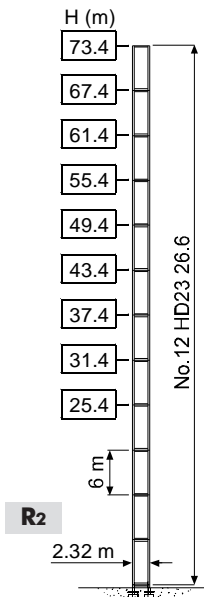
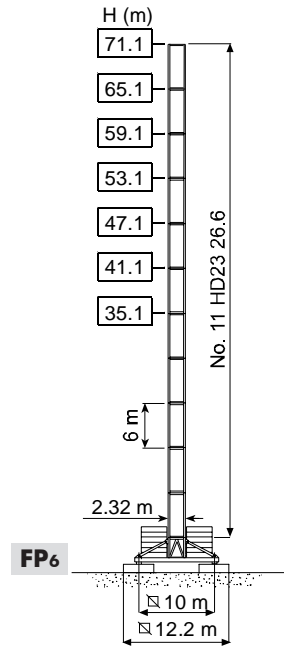
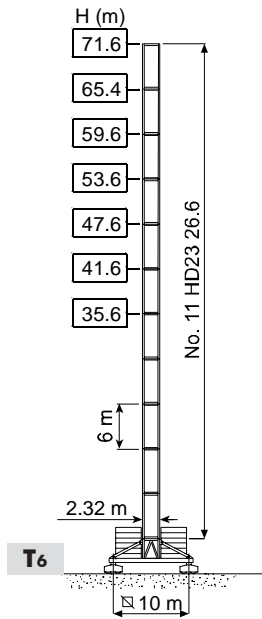
TEREX | COMEDIL

CTT 721-40

Torre	I	Tour	F	Torre	E
Tower	GB	Turm	D		

HD23

- H Altezza max. sotto gancho (vento max. f.s. 151 km/h) **I**
- H Max. under hook height (out-of-service max wind 151 km/h) **GB**
- H Hauteur maxi. sous crochet (vent maxi. h.s. 151 km/h) **F**
- H Höchste Hackenhöhe (a.B. max. Wind 151 km/h) **D**
- H Maxima altura bajo gancho (viento máximo f.d.s. 151 km/h) **E**



TEREX | COMEDIL

CTT 721-40

Meccanismi	I	Mécanismes	F	Mecanismos	E
Mechanisms	GB	Antriebe	D		

94 AFC 200	200 * kVA	400 V - 50 Hz / 460 V - 60 Hz	2000/14/CE

* Gru senza traslazione / Crane without travelling equipment / Grue sans translation / Krane ohne Schienenfahren / Grúa sin traslación

		m/min	t		kW	
		0 ⇌ 21	20	1°	94	478 m
		0 ⇌ 52	7.5			
		0 ⇌ 58	6.4	2°		
		0 ⇌ 146	2			
		0 ⇌ 11	40	1°		
		0 ⇌ 26	15			
		0 ⇌ 29	12.8	2°		
		0 ⇌ 73	4			

	DVF 5 11 D1	0 ⇌ 88 m/min	11 kW
	SCC 2 2 132 P	0.67 r.p.m.	2 × 18 kW
	TSR 4RG 4M8	12 ⇌ 24 m/min (50 Hz)	4 × 80 Nm
		14 ⇌ 28 m/min (60 Hz)	
	TVF 4RT 4M9	0 ⇌ 21 m/min	4 × 9 kW

	▲	●
	Max. H [m]	
T₆	53.6	> 53.6

	Sollevamento	I	Hoisting	GB	Levage	F	Heben	D	Elevación	E
	Marcia velocità		Gear		Rapport		Gang		Velocidad	
	Traslazione carrello		Trolleying		Distribution		Katzfahren		Distribución	
	Rotazione		Slewing		Orientation		Schwenken		Orientación	
	Traslazione		Travelling		Translation		Schienenfahren		Traslación	
	Direttiva sul livello acustico		Directive on noise level		Directive sur le niveau acoustique		Richtlinie für den Schall-Leistungspegel		Directiva sobre el nivel acustico	
	Consultateci		Consult us		Nous consulter		Auf Anfrage		Consultarnos	
	Potenza totale richiesta		Power requirements		Puissance totale nécessaire		Geforderte Stromstärke		Potencia necesaria	
	Alimentazione		Power supply		Alimentation		Stromversorgung		Alimentación	

Gru Comedil s.r.l.
 A Terex Company
 Via S. Egidio 42/A, 33074 Fontanafredda (PN) - Italy
 Tel. (+39) 0434 567 311 - Telefax (+39) 0434 998631
 Internet e-mail: info@comedil.com
 Internet home page: www.comedil.com



Divisione Automontanti
 Via Alessandrina, 25 - 20095 Cusano Milanino (MI) - Italy
 Tel. (+39) 02 613 16011 - Telefax (+39) 02 613 16034
 Internet e-mail: info.CBR@comedil.com

Bigge Crane and Rigging Co.
 10700 Bigge Avenue
 San Leandro, CA 94577
 Phone: (888) 337-BIGGE or (510) 638-8100
 Fax: (510) 639-4053
 Email: towers@bigge.com
 Web site: www.biggetowercrane.com

