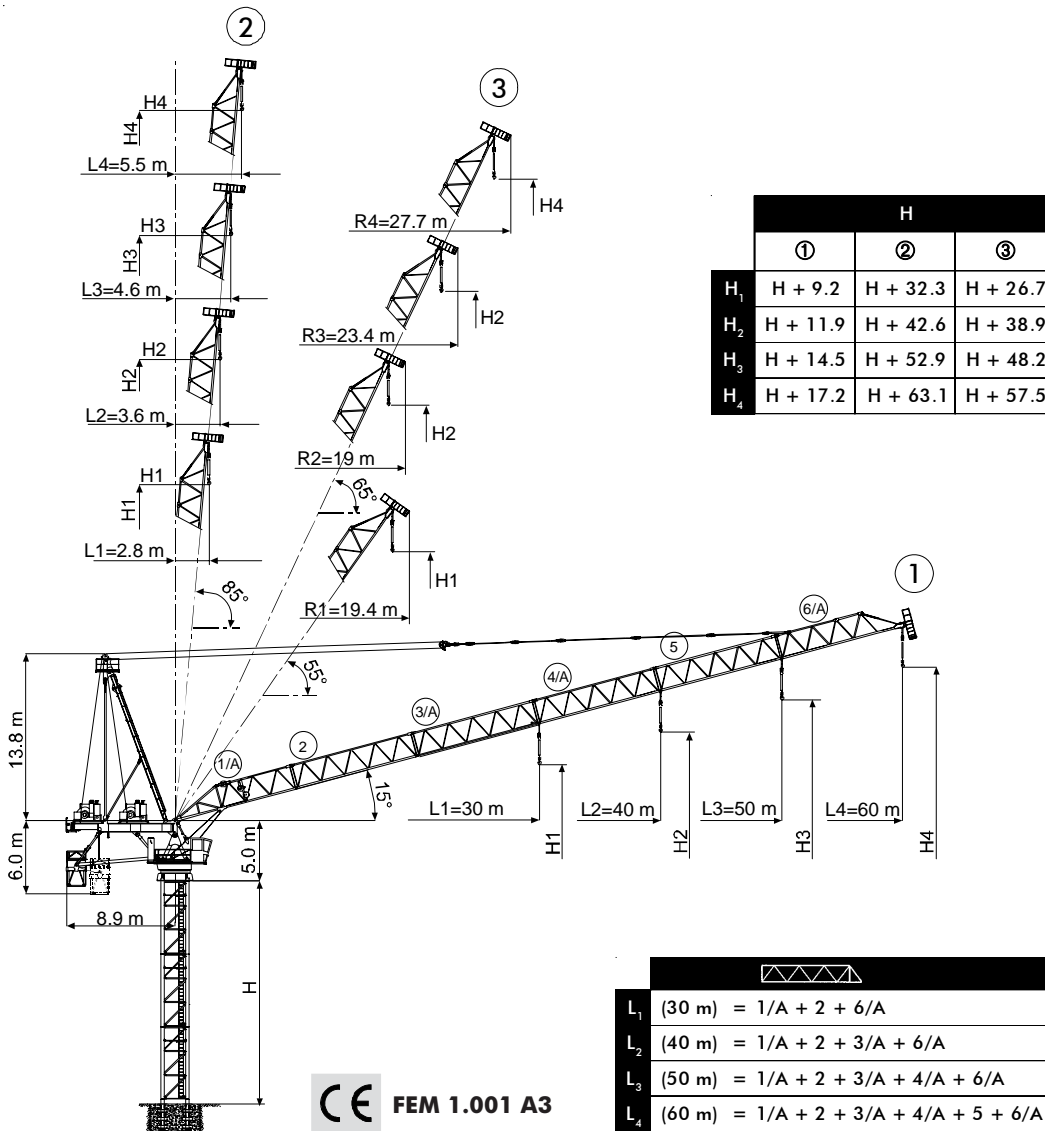




- Gru a torre a braccio impennabile
- Luffing Jib Tower Crane • Grue à tour à flèche relevable
- Turmdrehkran mit Steilstellung-Ausleger
- Grúa torre de pluma abatible



**CTL 630-32 HD23**

In vigore dal: 01 gennaio 2007. Le specifiche del prodotto ed i prezzi sono soggetti a modifica senza alcun obbligo di preavviso. Le fotografie e/o disegni nel presente documento hanno uno scopo meramente illustrativo. Per il corretto utilizzo di ciascuna attrezzatura, si rimanda allo specifico manuale d'istruzioni. L'inosservanza di quanto previsto nel manuale d'istruzione nell'utilizzo dell'attrezzatura, così come un comportamento irresponsabile potrebbero causare gravi lesioni o il decesso. Le nostre attrezzature sono coperte solo ed esclusivamente dalla garanzia standard scritta prevista per ogni specifico prodotto, con esclusione di qualsivoglia ulteriore garanzia, sia tacita che espressa, da parte di Terex. I prodotti e servizi elencati possono essere marchi di fabbrica, di servizi o ragioni sociali appartenenti a Terex Corporation e/o alle sue affiliate operative sia negli USA che in altri paesi e tutti i diritti s'intendono riservati. "TEREX" è un marchio appartenente a Terex Corporation e registrato sia negli USA che in altri paesi. Copyright © 2007 Terex Corporation.

Effective Date: January 01, 2007. Product specifications and prices are subject to change without notice or obligation. The photographs and/or drawings in this document are for illustrative purposes only. Refer to the appropriate Operator's Manual for instructions on the proper use of this equipment. Failure to follow the appropriate Operator's Manual when using our equipment or to otherwise act irresponsibly may result in serious injury or death. The only warranty applicable to our equipment is the standard written warranty applicable to the particular product and sale and Terex makes no other warranty, express or implied. Products and services listed may be trademarks, service marks or trade-names of Terex Corporation and/or its subsidiaries in the USA and other countries and all rights are reserved. "TEREX" is a registered trademark of Terex Corporation in the USA and many other countries. Copyright © 2007 Terex Corporation.

UTEDOC. REV.003

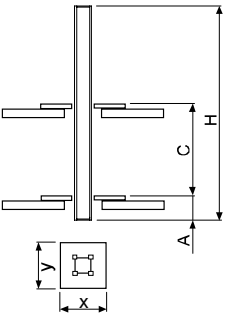
**TEREX** | COMEDIL

# CTL 630-32

**Diagramma di portata** **I**      **Courbes de charges** **F**      **Curvas de cargas** **E**  
**Load Diagram** **GB**      **Lastkurven** **D**

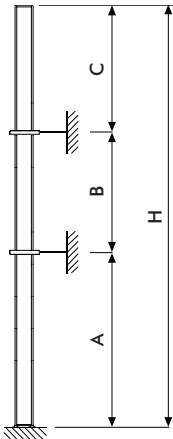
CTL 630-32													
		m	20	22	25	27	30	35	40	45	50	55	60
16 t	- 35 m	t	16,00	16,00	16,00	16,00	16,00	16,00	13,90	12,27	10,96	9,89	9,00
16 t	- 41,9 m	t	16,00	16,00	16,00	16,00	16,00	16,00	16,00	14,82	13,20		
32 t	- 21,8 m	t	32,00	31,78	27,80	25,64	22,93	19,46	16,85	14,82	13,20		
16 t	- 40 m	t	16,00	16,00	16,00	16,00	16,00	16,00	16,00				
32 t	- 22,6 m	t	32,00	32,00	28,84	26,60	23,80	20,20	17,50				
16 t	- 30 m	t	16,00	16,00	16,00	16,00	16,00						
32 t	- 22,8 m	t	32,00	32,00	29,08	26,82	24,00						

**Altre installazioni** **I**      **Autres implantations** **F**      **Otras implantaciones** **E**  
**Other configurations** **GB**      **Aufstellmöglichkeiten** **D**



**i**

Gru climbing **I**  
 Bottom climbing crane **GB**  
 Télescopage sur dalles **F**  
 Kletterkran im Gebäude **D**  
 Telescopage grúa trepadora **E**



**i**

Gru ancorata **I**  
 Crane tied to the structure **GB**  
 Grue ancrée **F**  
 Geankerter Kran **D**  
 Grúa anclada **E**

		HD 23 26/A							
		L1	L2	L3	L4	L1	L2	L3	L4
Vento MAX fuori servizio (km/h)	A <sub>min</sub>	200		164		200			
	C <sub>min</sub>	0.59							
	H <sub>max</sub>	54	14		48		54	16	
	x	2.95							
	y	2.48							
		HD 23 26/A							
		L1	L2	L3	L4	L1	L2	L3	L4
Vento MAX fuori servizio (km/h)	A <sub>min</sub>	225		200		225			
	C <sub>min</sub>	0.59							
	H <sub>max</sub>	54	18		48		54	20	
	x	2.95							
	y	2.48							

		HD23 R1		HD23 R2	
		[m]		[m]	
		L <sub>3-4</sub>	L <sub>1-2</sub>	L <sub>3-4</sub>	L <sub>1-2</sub>
A <sub>min/max</sub> B <sub>min/max</sub> C <sub>max</sub> H <sub>max</sub>	A <sub>min/max</sub>	30/30		30/54	30/60
	B <sub>min/max</sub>	24/30		24-30	24/36
	C <sub>max</sub>	24-(30 <b>I</b> )	30-(36 <b>I</b> )	24-(30 <b>I</b> )	30-(36 <b>I</b> )
	H <sub>max</sub>	<b>I</b>			

**i** Consultateci **I**      Consult us **GB**      Nous consulter **F**      Auf Anfrage **D**      Consultarnos **E**



**TEREX** | COMEDIL

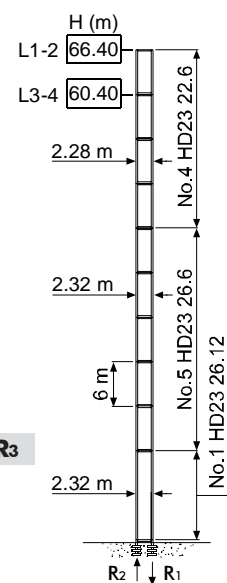
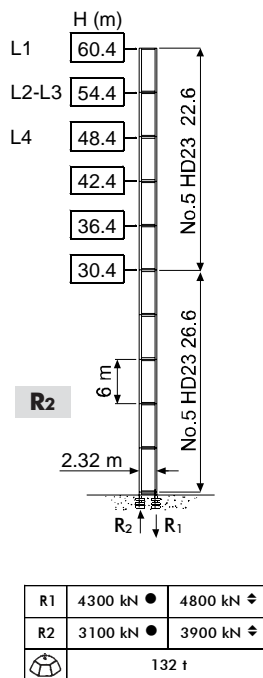
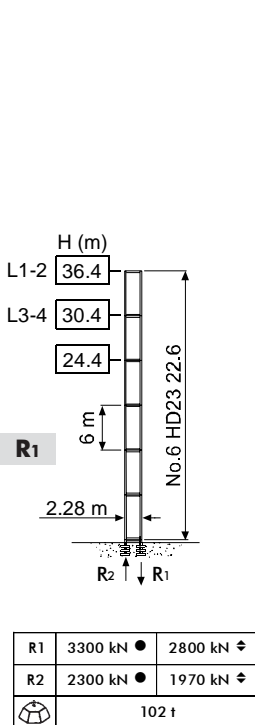
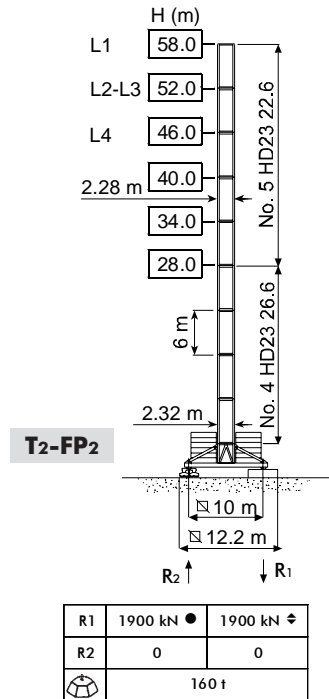
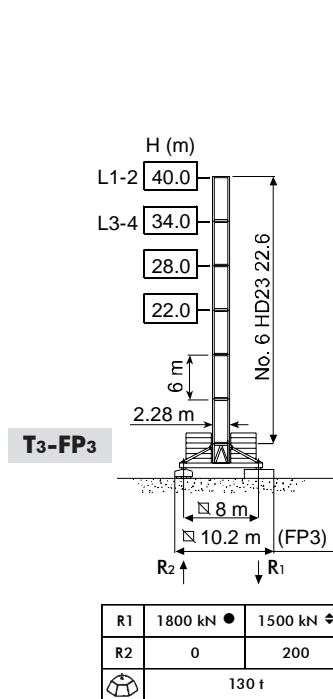
# CTL 630-32

Torre **I**  
Tower **GB**

Tour **F**  
Turm **D**

Torre **E**

## HD23



H Altezza massima sotto gancho **I** Max. under hook height **GB** Hauteur maxi. sous crochet **F** Höchste Hackenhöhe **D** Maxima altura bajo gancho **E**



**TEREX** | COMEDIL

# CTL 630-32

**Meccanismi I Mechanisms GB Mécanismes F Antriebe D Mecanismos E**

	SRWB 102 160/5	301 * kVA	400 V - 50 Hz	2000/14/CE modificata
	SRWB 122 160/5	325 * kVA	460 V - 60 Hz	
	110 AWL 160	297 * kVA	400 V - 50 Hz / 460 V - 60 Hz	

\* Gru senza traslazione / Crane without travelling equipment / Grue sans translation / Krane ohne Schienenfahren / Grúa sin traslación

		m/min	t	kW			
	<b>SRWB 102 160/5</b> 50 Hz		0 ⇌ 32	16	102	600 m	
			0 ⇌ 50	10			
			0 ⇌ 80	6			
		0 ⇌ 125	3.5				
			0 ⇌ 16	32			
			0 ⇌ 25	20			
	0 ⇌ 40		12				
		<b>SRWB 122 160/5</b> 60 Hz		0 ⇌ 38	16	112	600 m
				0 ⇌ 60	10		
				0 ⇌ 96	6		
0 ⇌ 150			3.5				
			0 ⇌ 19	32			
			0 ⇌ 30	20			
		0 ⇌ 48	12				
		<b>110 AWL 160 LLC D1</b>		0 ⇌ 26	16	110	340 m
				0 ⇌ 36	11.3		
				0 ⇌ 50	8.1		
	0 ⇌ 69		5.6				
			0 ⇌ 80	0.8			
			0 ⇌ 13	32			
		0 ⇌ 18	22.6				
			0 ⇌ 25	16.2			
			0 ⇌ 35	11.2			
			0 ⇌ 40	1.6			

	<b>LWL 11000</b>	2.8 min	110 kW
	<b>SCC 2 2 132 L</b>	0 ⇌ 0.65 r.p.m.	2 × 14 kW
	● <b>TVF 2RT 4M11</b>	0 ⇌ 24 m/min	4 × 11 kW
	▲ <b>TSR 4RG 4M8</b>	12 ⇌ 24 m/min	4 × 80 Nm
	■ <b>TVF 4RT 8M11</b>	0 ⇌ 24 m/min	8 × 11 kW

	●	▲	■
	Max. H [m]		
T <sub>3</sub>	28.1	40.1	40.1
T <sub>2</sub>	40.1	70.1	70.1
P <sub>1</sub>	-	40	40

	Sollevamento		Levage		Heben		Elevación
	Brandeggio		Luffing		Ausleger-Einziehen		Elevación de pluma
	Rotazione		Slewing		Schwenken		Orientación
	Traslazione		Travelling		Schienenfahren		Traslación
	Directiva sul livello acustico		Directive on noise level		Richtlinie für den Schall-Leistungspegel		Directiva sobre el nivel acustico
	Consultateci		Consult us		Auf Anfrage		Consultarnos
	Potenza totale richiesta		Power requirements		Geforderte Stromstärke		Potencia necesaria
	Alimentazione		Power supply		Stromversorgung		Alimentación

**Gru Comedil s.r.l.**

A Terex Company

Via delle Innovazioni 17, 33074 Fontanafredda (PN) - Italy  
Tel. (+39) 0434 989 111 - Telefax (+39) 0434 998 631

Internet e-mail: info@comedil.com  
Internet home page: www.comedil.com

**Divisione Automontanti**

Via Alessandrina, 25 - 20095 Cusano Milanino (MI) - Italy  
Tel. (+39) 02 613 16011 - Telefax (+39) 02 613 16034

Internet e-mail: info.CBR@comedil.com

**SISTEMA QUALITA' AZIENDALE**

certificato in accordo alla norma iso 9001:2000