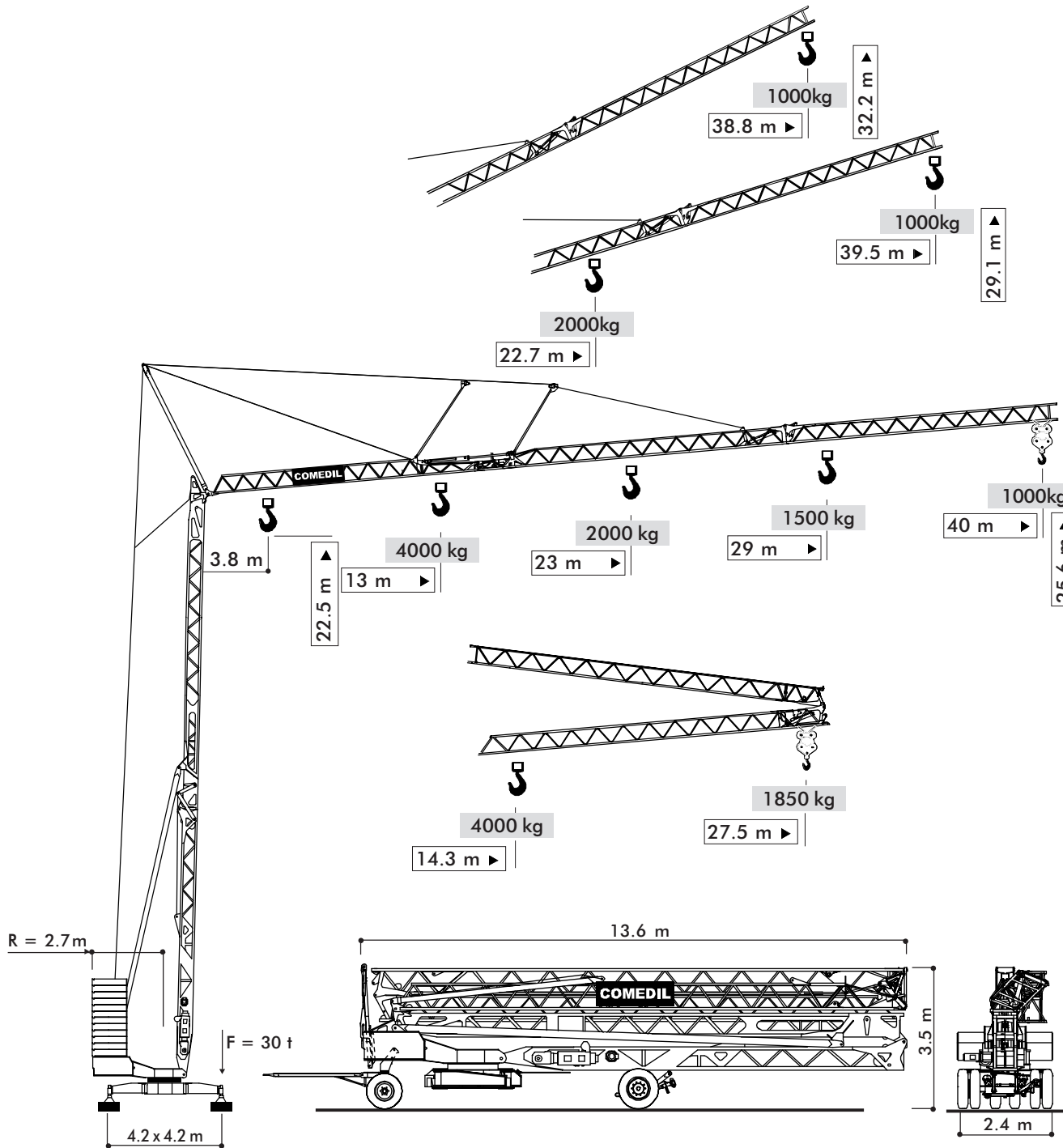


TEREX | COMEDIL

Gru a montaggio rapido
Self-erecting Crane • Grue à montage rapide
Schnellmontagekran • Grúa de montaje rapido

BREVETTATA • PATENTED • PATENTIERT • BREVETÉE • PATENTADA



CBR 40H-4

THE ULTIMATE CRANE™

Dati illustrativi non impegnativi
Con riserva di modifica senza preavviso

Specifications and data not binding
Subject to modification without notice

Données techniques seulement indicatives
Modifications réservées sans préavis

Angaben und Beschreibung unverbindlich
Änderungen vorbehalten ohne weitere Mitteilung

Dibujos y datos sin compromiso
Modificaciones reservadas sin preaviso







UTEDOC.REV.000

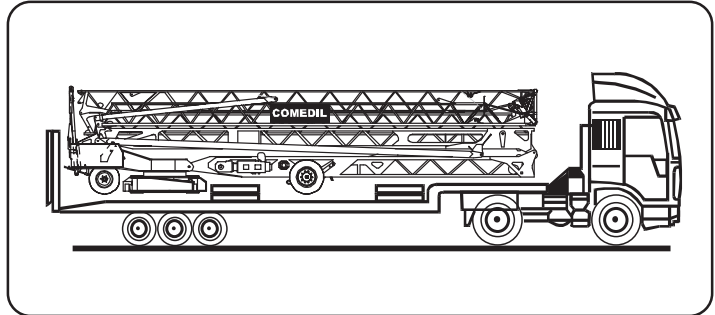
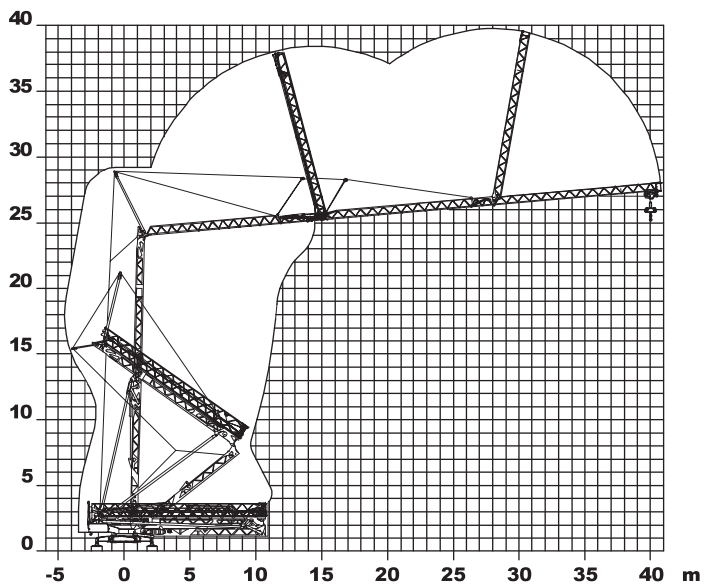


TEREX | COMEDIL

CBR 40H-4

- movimenti controllati da inverter
- motions controlled by frequency converter
- Frequenzumrichter gesteuerte Bewegungen
- mouvements contrôlés par variateur
- movimientos controlados por variadores
- montaggio oleodinamico integrale
- full hydraulic erection
- vollhydraulische Montage
- montage hydraulique intégral
- montaje hidraulico integral
- trasportabile con zavorra di montaggio
- trailerable with erection ballast
- verfahrbar mit Montage-Ballast
- transportable avec lest de montage
- transportable con lastre de montaje

CBR 40H-4			📏			📏		
			m/min	kg	kW	m/min	kg	kW
Sollevamento Hoisting Heben Levage Elevación	  		0 ⇒ 6	2000	8.8	0 ⇒ 3	4000	8.8
			6 ⇒ 23	2000		3 ⇒ 11.5	4000	
			23 ⇒ 46	1000	11.5 ⇒ 23	2000		
Distribuzione - Trolleying Katzfahren - Distribution Distribución			0 ⇒ 16 ⇒ 46		3	0 ⇒ 16 ⇒ 46		3
Rotazione - Slewing Schwenken - Orientation Orientación			0 ⇒ 0.2 ⇒ 0.8 tr/min-U/min-rpm - 6 daNm					
Montaggio - Erection - Montage - Montaje - Montaje								2.2 kW
Potenza elettrica necessaria • Power requirements • Puissance électrique nécessaire Anschlußwert • Potencia electrica necesaria								20 kVA
Rete elettrica • Main supply • Réseau • Netzstrom • Alimentación								400 V - 50 Hz
Zavorra • Ballast • Lest • Ballast • Lastre			26150 kg	Peso gru • Crane weight • Poids grue • Kranengewicht • Peso grua			15400 kg	



CE 98/37CE - 2000/14/CE - 89/336 CEE
DIN 15018 H1-B3
DIN 15019/15020/4114